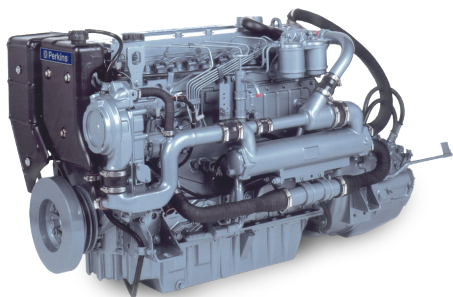


# Marine Propulsion Engine

## M130C

1006 Series



Premium engine features for reliability and durability - minimises engine down time and service costs

Lowest cost of ownership in its class - it pays to compare running costs

Unrivalled worldwide parts and service network - You can make the most of your machine with support from our global network

One of the most compact packages in its class - offers boat design flexibility with easier new boat and repower installation

Operator and environmentally friendly with low noise, rapid startability and low emissions. This is achieved with the 'QUADRAM' combustion system and fully closed breather system

Competitive engine and parts pricing, extended service intervals and exceptionally low fuel consumption make the M130C a cost effective choice with significant owner savings over alternative engines

### Powered By Your Needs

Perkins engines can be tailored specifically for you. These engines offer a choice of standard build configurations to match the needs of customers for a diverse range of applications.

### World Class Product Support

With 80 years experience, we are experts in the engines industry. At Perkins we are constantly researching, developing and investing in our products and services. Strong global support is provided through a network of over 130 distributors and service outlets in 184 countries, providing access to over 50,000 parts and exchange units 24 hours a day, 365 days a year.

### Lower Operating Costs

Service intervals 400 hours as standard and Perkins provides comprehensive warranty cover for 2 years, with 3 years on major engine components.

### Reliable Power

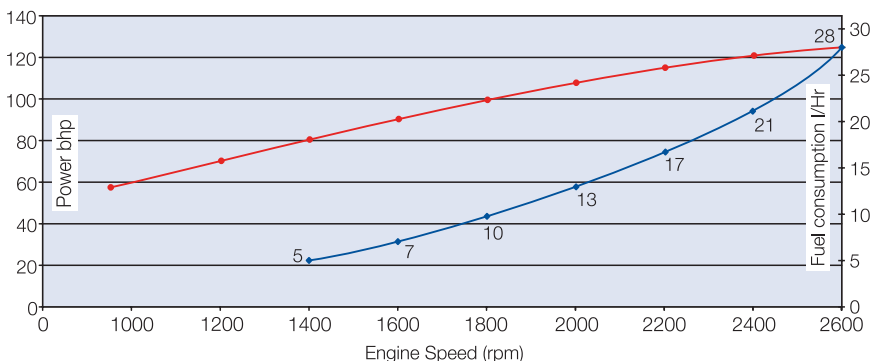
High capacity heat exchange equipment with cupro-nickel tube stack ensuring low operating temperatures for reliable and durable performance. Perkins high manufacturing standards meet the rigorous quality standards of ISO 9000.

### Ease Of Installation

Easy access to all routine servicing points in either single or twin installations

Engine designed to permit a wide range of operating angles in both conventional shaft or vee - drive installations.

Model	Rating	Peak Torque (Nm)	Rating
M130C	96 kW @ 2600 rpm	430 @1500 rpm	MD



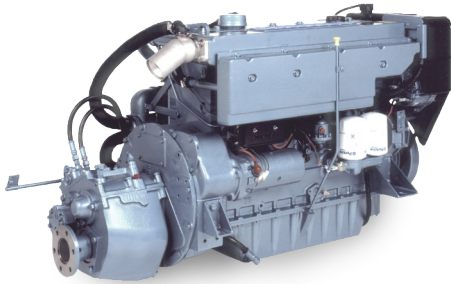
Propeller law consumption (2.8 index). Propellers should be matched to achieve rated engine speed under fully laden boat conditions. Engine as delivered from factory will be set to produce gross (flywheel) power output with in manufacturing tolerances and run-in allowance



THE HEART OF EVERY GREAT MACHINE

# M130C

## 1006 Series



### Benefits:

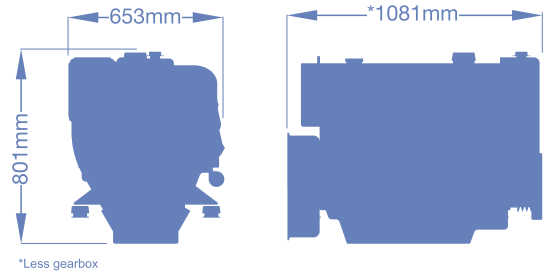
- Excellent power to weight
- Ease of installation
- Clean, quiet, smooth operation
- Excellent fuel economy
- Easy to maintain with 500hr Service interval
- Reliability

### Standard Features

- Fresh water heat exchanger cooled engine with gear driven self priming raw water and fresh water pumps or keel cooling adaption
- Fresh water cooled exhaust manifold
- Air intake with re-usable elements
- High inclination engine sump, top access dipstick and engine mounted sump drain pump
- Twin spin-on element lubricating oil filter
- Integral plate type engine lubricating oil cooler
- Closed breather system
- High mounted twin element fuel filter
- Thermostat cold start aid
- Manual control adaption parts
- Electric stop solenoid
- Alarm switches and warning siren

### Optional Equipment

- Marine transmissions (standard), Hurth HSW 450A, Newage PRM 5000
- Electrical - 12 and 24 volt insulated marine electrics
- Exhaust outlets
- Water injected outlet including high rise option
- Dry outlets with flexible expansion bellows
- Instrumentation - single and dual station instrumentation
- Power Take Off - crankshaft PTO extension shaft with pulley drive option
- Solid mounting brackets
- Flexible engine mountings with alignment shims
- Solid and flexible output couplings
- Toolkit
- On board parts kit
- Electro-magnetic bilge pumps (engine mounted)
- Calorifier connections
- Fuel pre-filter with water alarm
- Flexible fuel feed and return pipes



General Data	
Number of cylinders	Vertical in-line 6 cylinder
Bore and stroke	100 mm x 127 mm
Displacement	6 litres
Aspiration	Natural
Cycle	4 stroke
Combustion system	Direct injection
Compression ratio	16.5:1
Rotation	Anti-clockwise from rear
Cooling system	Water
PTO	Available from front end drive (for drive limitations refer to Perkins)
Operational angle (max)	Maximum continuous operating angles: 20° engine front up, 8° engine front down (option kit) 30° sideways
Dimensions	*Length 1081 mm, Width 653 mm, Height 801 mm
Dry weight	559 kg
Wet weight	595 kg
Final weight and dimensions will depend on completed specification	

### Rating Definitions

#### Pleasure Duty

For vessels operating up to 30% load factor. This rating is intended for pleasure/non-revenue generating applications that operate less than 500 hours a year. Typical applications could include but are not limited to: High speed planning craft.

#### Light Duty

For vessels operating up to 50% load factor. This rating is intended for applications that operate less than 1500 hours a year in variable load applications where full power is limited to 2 hours out of every 12 hours of operation and reduced power must be at or below 200 rpm of the maximum rated rpm. Typical applications could include but are not limited to: planing / semi displacement craft such as customs and police launches, sport fish charter vessels, passenger carriers, survey craft and long distance cruisers etc.

#### Medium Duty

For vessels operating up to 60% load factor. This rating is intended for applications that operate less than 4000 hours a year. Typical applications could include but are not limited to: Semi-displacement / displacement craft such as customs and police launches, high speed commercial fishing, passenger carriers, survey craft, ferries and long distance cruisers etc.

#### Heavy Duty

For vessels operating up to 80% load factor. This rating is intended for applications that operate less than 4000 hours a year. Typical applications could include but are not limited to: semi-displacement / displacement craft such as customs and police launches, high speed commercial fishing, passenger carriers, survey craft and ferries etc.

For further details on definitions please contact your local Perkins distributor.

Distributed by